

**NEW!**

ENGINE

Model	: ISUZU 6UZ1XBSW-S
Type	: Water-cooled, 4 cycle, 6 cylinders, line type, direct injection, turbocharger, intercooler, diesel engine
Power	: 362 HP (270 kW) @2000 rpm / SAE J1995 (Gross)
Max. Torque	: 1650 Nm @1300 rpm (Gross)
Displacement	: 9839 cc
Bore and Stroke	: \varnothing 120 mm x 145 mm
Emission Class	: EU: Stage V

UNDERCARRIAGE

Type	: Extracted-retracted VG(variable gauge) type undercarriage
Shoe	: 3 grouser
No. Of Shoes	: 2 x 50
No. Of Lower Rollers	: 2 x 9
No. Of Upper Rollers	: 2 x 3
Full Trackguard	: Complete
Track Tensioning	: Hydraulic Spring Tensioning

CAB

- Wide cab and easy entrance
- Use of six viscomount cabin mountings that dampen the vibrations
- Cooled storage room
- Colourful, Easy to read TFT indicant monitor
- Glass holder, book and object storage pockets
- Full automatic digitally air-conditioner
- Overclass standards on the visibility
- Pool type floor mat
- Improved operator's comfort through versatile adjustable seat
- Ergonomically redesigned cabin through relocated switch board, and re-styled travel pedals and joysticks.
- USB connected MP3 player
- Easy to open the front sliding glass
- Front and rear sun visor
- Large storage areas
- Improved seat to back angle
- The height adjustable seat armrests
- Opera Control System

TRAVEL AND BRAKERS

Travel	: Fully hydrostatic
Travel Motors	: 2 speed stages, swash plate axial piston motor
Reduction	: 3 stage planetary gear
Travel Speed	
High Speed	: 4,6 km/h
Low Speed	: 2,8 km/h
Max. Drawbar Pull	: 35,035 kgf
Gradeability	: 35° (%70)
Parking Brake	: Hydraulic multi disc type, integrated transmission
Ground Pressure (600mm Shoe)	: 0,81 kgf/cm ²

HYDRAULIC SYSTEM

Main Pump	
Type	: Double variable displacement axial piston pumps
Max. Flow	: 2 x 366 L/min
Pilot Pump	: 28,5 L/min
Relief Valves	
Attachment	: 320 kgf/cm ²
Power Boost	: 355 kgf/cm ²
Travel	: 320 kgf/cm ²
Swing	: 330 kgf/cm ²
Pilot	: 40 kgf/cm ²
Cylinders	
Main Boom	: 2 x \varnothing 170 x \varnothing 115 x 1.650 mm
Stick Cylinder	: 1 x \varnothing 190 x \varnothing 130 x 1.870 mm
Bucket Cylinder	: 1 x \varnothing 170 x \varnothing 120 x 1.335 mm

OPERA CONTROL SYSTEM

- | | |
|---|---|
| • Automatic idling Selection of multi-language on control panel | • Overheat prevention and protection system without interrupting the work |
| • Improved fuel economy and productivity | • Easy-to-use control panel and menus |
| • Automatical electric power-off | • Rear-view, arm-view camera |
| • Maximum efficiency by selection of power and work modes | • Possibility to register 27 different operating hours |
| • Error mode registry and warning system | • Anti-theft system with personal code |
| • Hidromek Smartlink (Optional) | Real time monitoring of operational parameters such as pressure, temperature, engine load |
| • Automatic preheating | |
| • Automatical powerboost | |

SWING SYSTEM

Swing Motor	: Axial piston type integrated with shock absorber valves
Reduction	: 2 stage planetary gear box.
Swing Brakes	: Hydraulic multi disc type, automatic warnings
Swing Speed	: 7,7 rpm

CAPACITY

Fuel Tank	: 655 L	Engine Oil	: 36,5 L
Hydraulic Tank	: 370 L	Engine Cooling System	: 65 L
Hydraulic System	: 615 L	Urea Tank	: 70 L

ELECTRICAL SYSTEM

Voltage	: 24 V
Battery	: 2 x 12 V x 165 Ah
Alternator	: 24 V / 50 A
Starting Motor	: 24 V / 5,5 kw

LUBRICATION

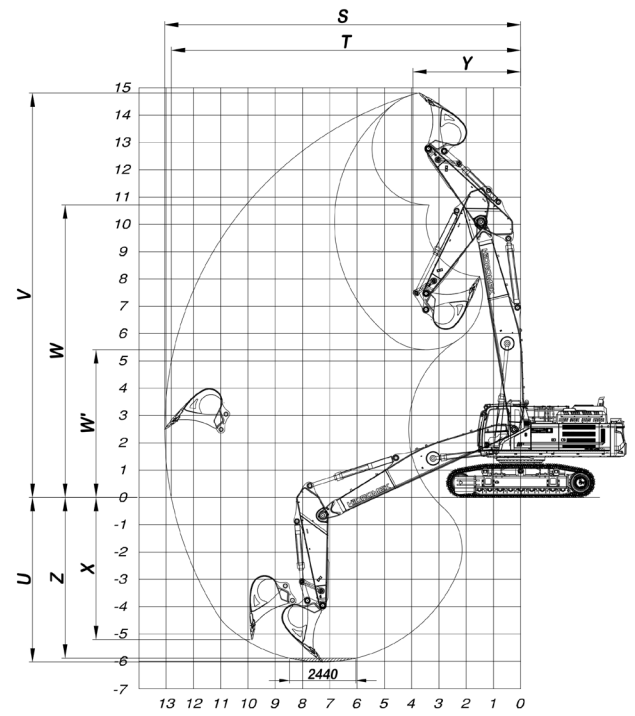
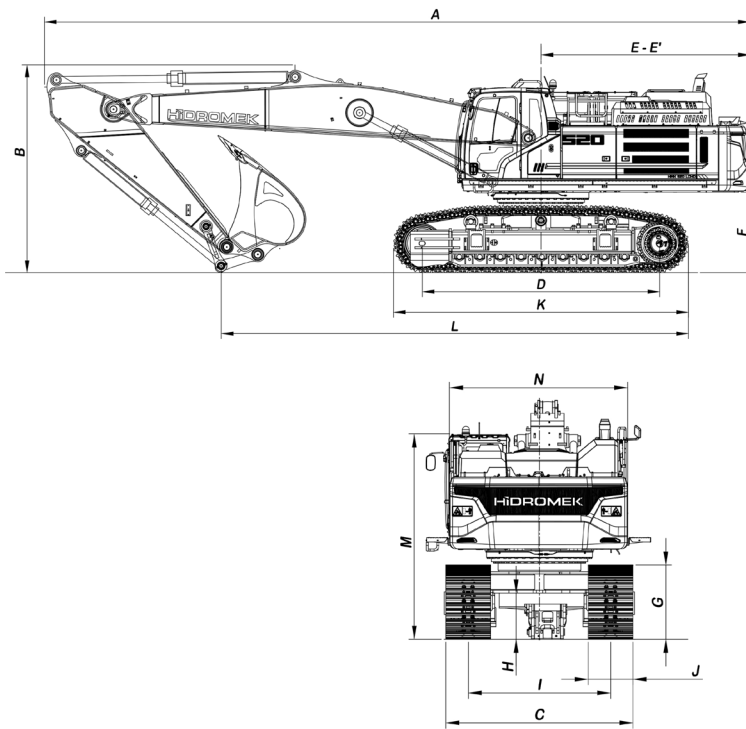
Centralized lubrication system is provided for lubrication all difficult-to-reach parts on the components, such as boom and arm

OPERATING WEIGHT

Standard machine operating weight	: 57.700 kg
-----------------------------------	-------------

Operational weight, complying with the ISO 6016 standards, includes full fuel tank, hydraulic system and other liquids, 75kg operator weight and standard equipped machine weight. Optional equipments are not included.

HMK 520LC SB H4



GENERAL DIMENSIONS

Boom Dimension	*7.700 mm
Arm Dimension	*3.300 mm
A - Overall Length	13.020 mm
B - Overall Height (to top of boom)	5.370 mm
C - Overall Width (Retracted-Extracted)	2.990 mm / 3.490 mm **3.190 mm / **3.690 mm
D - Idler Distance	4.400 mm
E - Counterweight Distance	3.875 mm
E' - Turning Radius	3.950 mm
F - Upper Structure Ground Clearance	1.485 mm
G - Crawler Height	1.245 mm
H - Minimum Ground Clearance	775 mm
I - Track Gauge(Retracted-Extracted)	2.390 mm / 2.890 mm
J - Shoe Width	600 mm
K - Overall Length of Crawler	5.470 mm
L - Length Over Ground	8.660 mm
M - Overall Height (to Top of Cab)	3.540 mm
N - Upper Structure Width	2.990 mm

* Standard

**With Step

WORKING DIMENSIONS

Boom Dimension	*7.700 mm
Arm Dimension	*3.300 mm
S - Maximum Digging Reach	13.000 mm
T - Maximum Digging Reach at Ground Level	12.750 mm
U - Maximum Digging Depth	5.960 mm
V - Maximum Digging Height	14.770 mm
W - Maximum Dumping Clearance	10.770 mm
W' - Minimum Dumping Clearance	5.460 mm
X - Maximum Vertical Digging Depth	5.090 mm
Y - Minimum Swing Radius	3.970 mm
Z - Maximum Digging Depth (2440 mm level)	5.820 mm

DIGGING PERFORMANCE

Standard Bucket Capacity	2,3 m ³ (SAE)
Bucket Digging Force (Power Boost) ISO	27.200 (29.200) kgf
Arm Crowd Force (Power Boost) ISO	22.300 (23.900) kgf



HIDROMEK®

FACTORY - HEAD OFFICE

Ahi Evran OSB Mahallesi Osmanlı Caddesi No:1 06935 Sincan / ANKARA / TÜRKİYE
Tel: (+90) 312 267 12 60 Fax: (+90) 312 267 12 39
www.hidromek.com

Notice:

Hidromek has the right to modify the specifications and design of the model indicated on this brochure without prior notice.